

# 17: Frontage Roads at Halls Bayou

## Rutas Laterales por Halls Bayou

### Description:

The frontage road at Halls Bayou and I-45 is currently below the Base Flood Elevation. It floods regularly, reducing crucial access during flood events. Additionally, it requires a redesign to allow for the Halls Bayou Greenway to continue under I-45.

### Also Addresses:

Connections

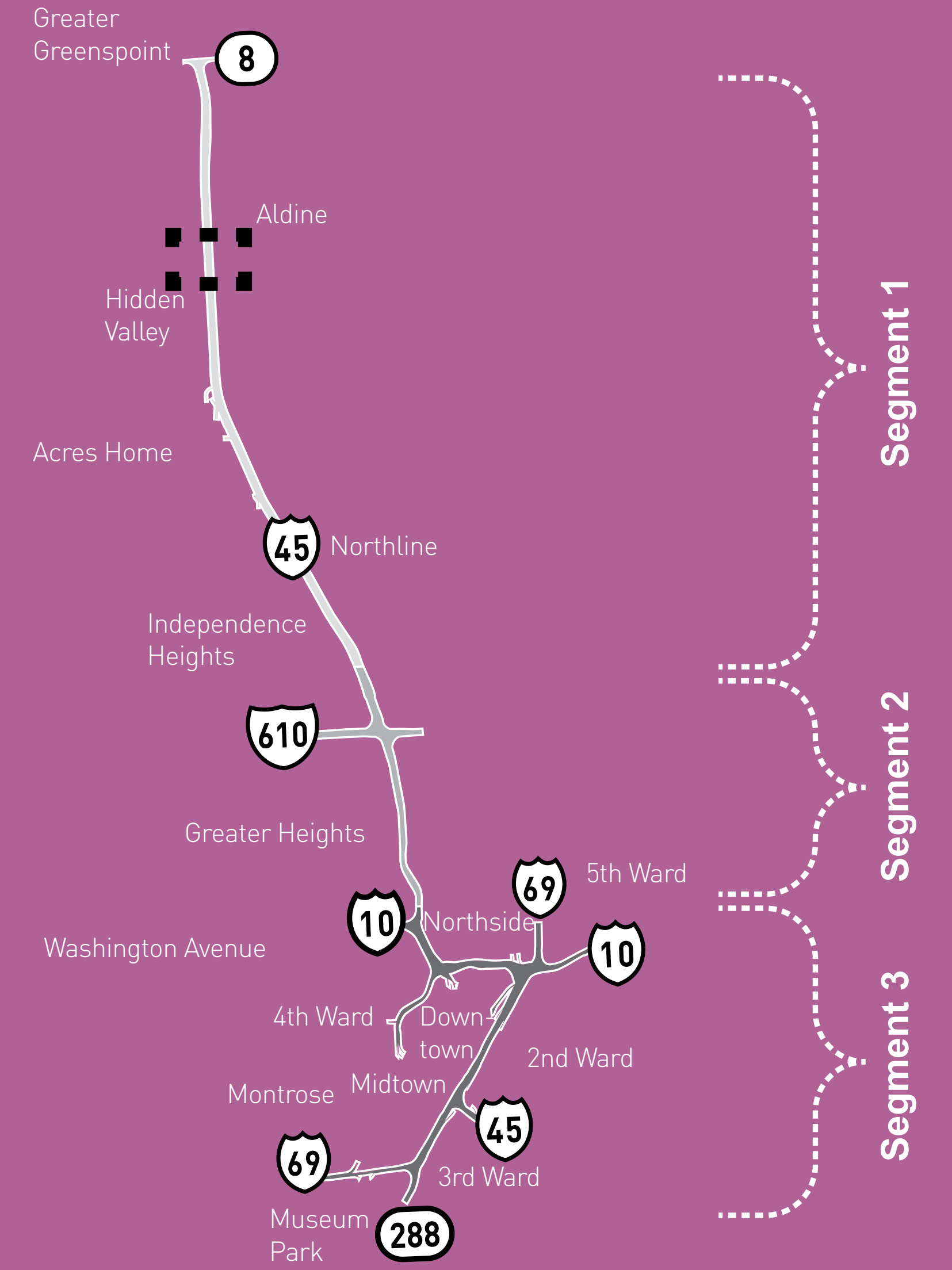
Traffic

### We Heard:

Ensure Halls Bayou Crossing north of W. Mt. Houston is design to allow trail crossing under freeway and frontage roads.

Halls Bayou is one of the bayous where the Bayou Greenways project is planned to construct 10' trails. Space and sufficient clearance and flat structure is needed under this segment of I-45 to allow for future construction for 10' trails.

### Key:



## TxDOT Proposal

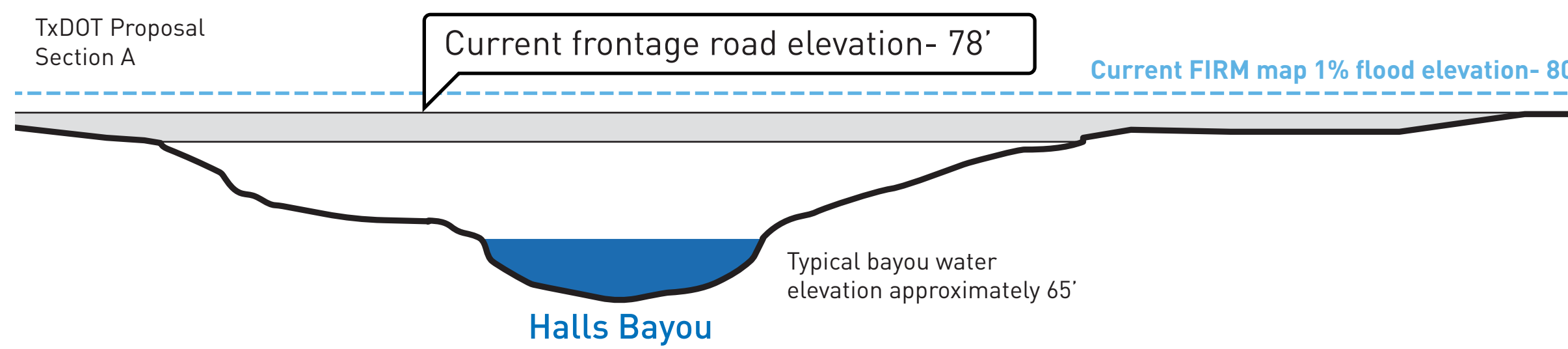
TxDOT proposes to reconstruct the frontage road at the same elevation as the current design.

### PROS

- No reconstruction of cross streets

### CONS

- Frontage roads continues to flood
- Frontage road elevations restricts water flow during flood events
- Inadequate clearance for bike-ways under frontage roads



## Give us your input.

Put your #17 sticker on the alternative you prefer.

### TxDOT Proposal

Grid of circles for voting on the TxDOT proposal.

## Alternative 17.1 - Raised Frontage Road

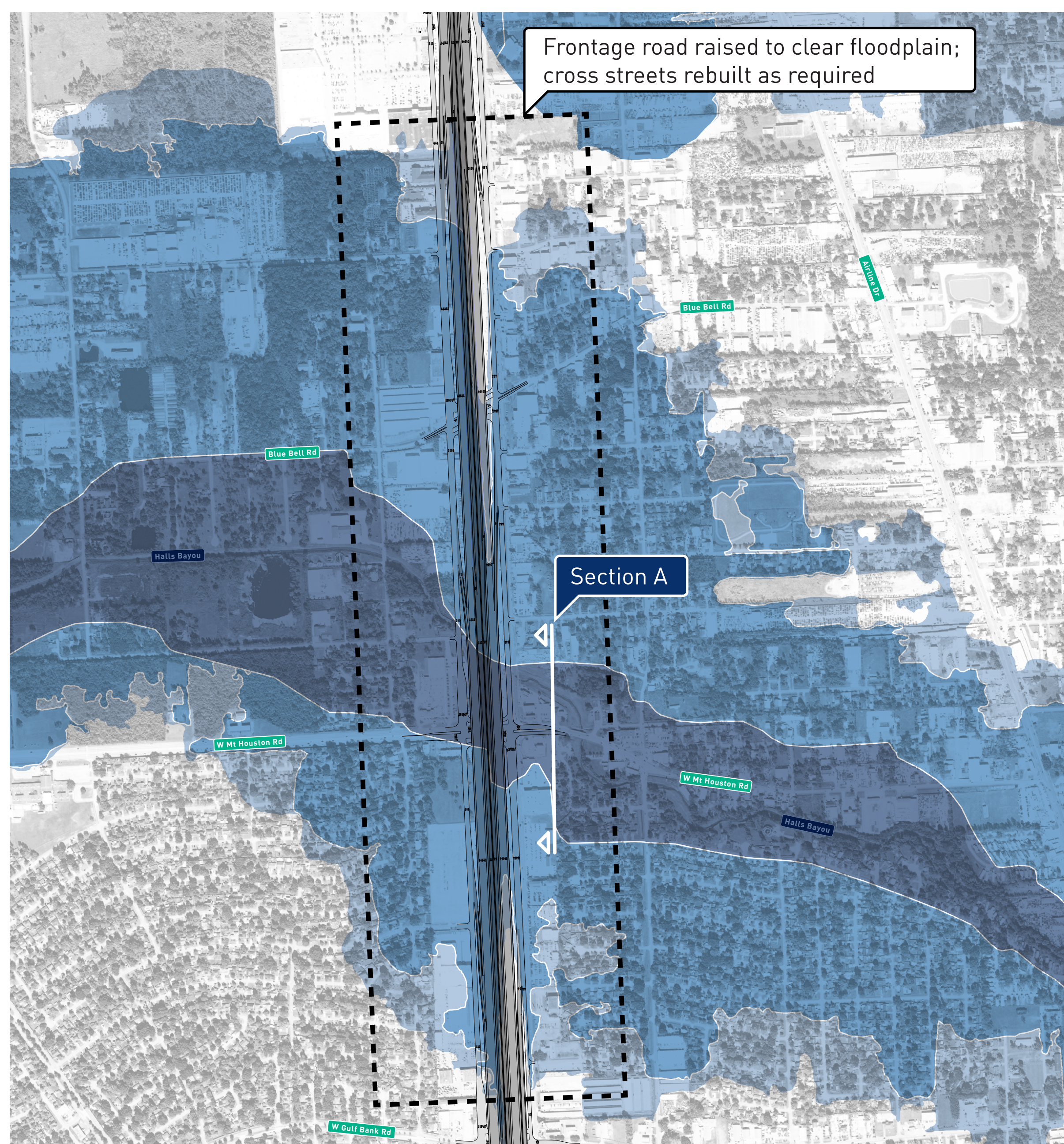
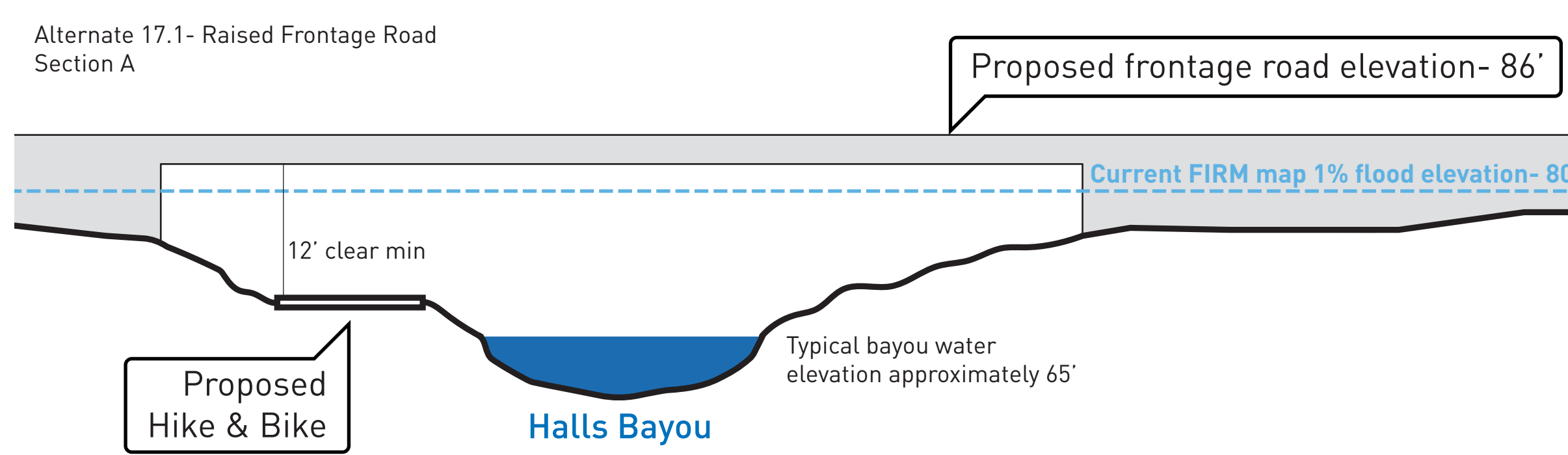
This alternative elevates the frontage road 6 feet above the Base Flood Elevation, allowing the Halls Bayou Greenway to safely continue past I-45.

### PROS

- No flooding of frontage roads
- Allows for better flow of water
- Allows adequate space for hike and bike trail underneath I-45

### CONS

- All cross streets must be rebuilt to meet with frontage road level
- All driveways on the frontage road must be rebuilt to meet with frontage road level, and access to some businesses may be more difficult



### Alternative 17.1 - Raised Frontage Road

Grid of circles for voting on Alternative 17.1 - Raised Frontage Road.